



What's New
Data Compare Tool
V2.18.02.0



Workforce Management Solutions
Securing your time and resources

This document is a listing of the changes made to the server app and service. Please take careful notice of the items highlighted in yellow.

IMPORTANT:

As of 2018-02-28 V2.18.02.0 is the only version to be used.

V2.18.02.0 – Release

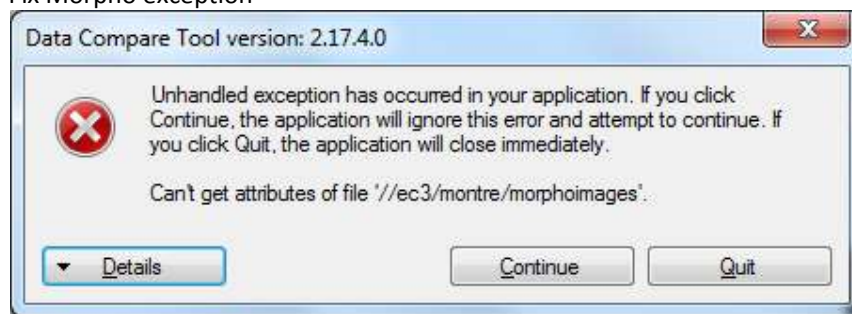
- Add weighbridge and visitor hosting (V7.42)

V2.17.07.2

- Add in reader version

V2.17.07.1 - Release

- Fix Morpho exception



V2.17.07.0

- Add Finger Info and IPBCM
Finger Pass "5"(100%), Finger Fail "0"(0%), Total Scanned "5"

V2.17.04.0 - Release

- Add required equipment and Morpho tables

V2.16.10.1

- Change Cycle shift columns for readability

V2.16.10.0

- Add new table 67 - External Lamp clock events (V7.28)
- CYCSFT greater than 255 (V7.27)

V2.16.06.2

- Fix ECII download files

V2.16.06.1

- Update data on tables (V7.27)

V2.16.06.0

- Add new tables and add new clockpoint data (V7.19-V7.26)

V1.15.10.0

- Initial version (V7.00 - V7.18)
-

***** END OF DOCUMENT *****