



**What's New**

**Service Dashboard**

V2.17.07.0



Workforce Management Solutions

Securing your time and resources

---

This document is a listing of the changes made to the server app and service. Please take careful notice of the items highlighted in yellow.

**IMPORTANT:**

It is always advisable to run all the same versions from a major or patch release.

**VERY IMPORTANT**

Only use V2.17.07.0 when the entire site has been upgraded to V2.17.04.0 including the Controller Interface and XTUpgrade. This version will not function correctly with previous versions.

V2.16.06.1 of the dashboard can only be used with the V2.16.06.0 major release. Get Upgrade queries must be run.

## V2.17.07.0

47714:177223 Version alignment only

## V2.17.04.0

47025:174604 Version alignment only

## V2.17.01.2

46655:173331 Version alignment only

## 2.17.01.0

Major changes have been made in this release for handling modules and licencing due to the introduction of the XTLite and XTElite systems. **DO NOT** run this version if the Controller Interface and XTUpgrade are not also V2.17.01.0

### 42302:171505 Register and module development

Controller Token expiry date on controller and engine level

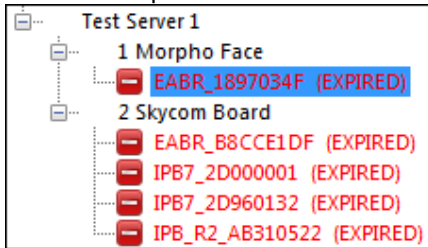
**ENGINE:**

16 HO Dev Test					
Status	Controller	IP Addr	Fixed Addr	Records Behind	Token Expiry
[-]	New Controller	192.168.108.62	2D960132	46	19/02/2019
[-]	Test Fixed		12345678	46	19/02/2019
[-]	_DevTest EC2 Byron	192.168.104.43	6E0051B9	46	19/02/2019
[!]	_DevTest EC3 EABR	192.168.108.91	1897034F	0	19/02/2019
[-]	_DevTestEC3Byron	192.168.108.76	B8CCE1DF	46	19/02/2019
[-]	_DevTestECII	192.168.104.48	6E003470	46	19/02/2019
[-]	_DevTestIPB6	192.168.104.47	2D0400CC	46	19/02/2019
[-]	_DevTestIPB7Byron	192.168.105.17	2D641BA4	46	19/02/2019
[+]	_DevTestIPB7CLee	192.168.104.151	2D000001	0	19/02/2019

**CONTROLLER:**

Server	192.168.108.72	Engine Name	16 HO Dev Test	Connected	No
Port	32750	Server Version	Disconnected		
Controller Id	04	Address	192.168.104.151		<input type="button" value="Ping"/>
Name	_DevTestIPB7CLee	Status	Up		<input type="button" value="Reset"/>
Version	7.37	Status time	30/01/2017 11:29:57		<input type="button" value="Reload tables"/>
Model	IPB7	Connected	...		
Comms	20170130-46	Token Expiry	19/02/2019 00:00:00		

In the tree view of the controllers the days left to expiry appear in brackets behind the name. If the token expires the word “expired” will show in brackets



The font colour of the name of the controller will change if the token is temporary



## 2.16.10.4

45183:168027 December 2016 patch release version alignment only

## 2.16.10.0

38428:148526 Read point on controller not updating correctly

The read point on the controller would go back to the number it was when first loaded every time the screen was refreshed.

Controller Id	05	Address	192.168.104.47	<input type="button" value="Ping"/>	
Name	_DevTestIPB6	Status	Up	<input type="button" value="Reset"/>	Reset Time 30/09/2016 11:
Version	7.34	Status time	03/10/2016 07:55:51	<input type="button" value="Reload tables"/>	Upload Time 30/09/2016 16:
Model	IPB7	Connected	None		
Comms	20161002-188				

## 2.16.06.4

42735:157292 Patch release version alignment only

## 2.16.06.2

42687:157152 Blank line on terminals screen of controller

The terminals are loaded into the grid from the database. The terminals in the grid are then maintained by messages received from the controller/terminals. However there was an exception in the procedure used to update the information in the grid – updated the row by finding the row that **contained** the same Term ID – however if you have a record with term ID 13 and Term ID 1 – will cause the same row to be updated – resulting in blank row.

V2.16.06.4:

Status	Id	Name	Version	Fixed Addr	Type
?	13	MORVITE ISSUE READER	7.26	0054C0CB	PT TA Terminal
?	1	HOSTEL-> SURFACE OUT T/S 4	7.26	0054F232	PT TA Terminal
?	2	HOSTEL-> SURFACE OUT T/S 6	7.26	0054F125	PT TA Terminal
?	7	HOSTEL-> LR 1 IN T/S 14	7.26	0054C735	PT TA Terminal
?	8	HOSTEL-> LR 1 OUT T/S 15	7.26	0054C37F	PT TA Terminal
?	9	HOSTEL-> LR 1 IN T/S 16	7.26	0054F0B7	PT TA Terminal
?	10	HOSTEL-> LR 1 IN T/S 17	7.26	0054EFA8	PT TA Terminal
?	11	HOSTEL-> SURFACE IN T/S 18	7.26	0054EFF4	PT TA Terminal
?	12	HOSTEL-> SURFACE IN T/S 19	7.26	0054F22C	PT TA Terminal

### V2.16.06.1:

Status	Id	Name	Version	Fixed Addr	Type	IP Address
	1	HOSTEL-> SURFACE OUT T/S 4	7.26	0054F232	PT TA Ter...	
	2	HOSTEL-> SURFACE OUT T/S 6	7.26	0054F125	PT TA Ter...	
	7	HOSTEL->LR 1 IN T/S 14	7.26	0054C735	PT TA Ter...	
	8	HOSTEL->LR 1 OUT T/S 15	7.26	0054C37F	PT TA Ter...	
	9	HOSTEL->LR 1 IN T/S 16	7.26	0054F0B7	PT TA Ter...	
	10	HOSTEL->LR 1 IN T/S 17	7.26	0054EFA8	PT TA Ter...	
	11	HOSTEL-> SURFACE IN T/S 18	7.26	0054EFF4	PT TA Ter...	
	12	HOSTEL-> SURFACE IN T/S 19	7.26	0054F22C	PT TA Ter...	

## 2.16.06.1

### 38428:148529 Version detail caused WINAUTH to fail

An incorrect version number in the history caused the updater to go into a loop when the system was set to WINAUTH.

### 2.16.06.0

Some major changes have been made to this release.

- User functionality and device rights
- Log on functionality
- Maximum concurrent connections
- Auto upgrade (See Please Note)

- **User rights**

A device access tree view has been added for giving rights to a user:

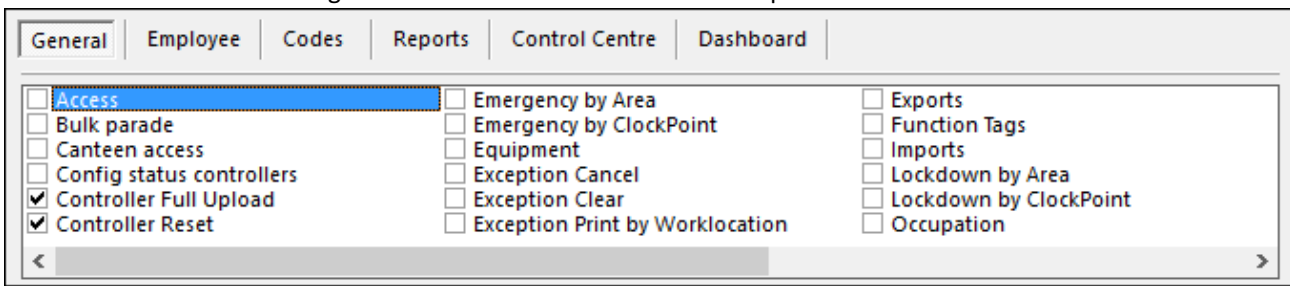
The screenshot shows the 'Device Access' configuration for user 'Cindy-Lee'. The interface includes tabs for 'Leave capture', 'Access Groups', and 'AddRemoveFunction'. Under the 'Device Access' tab, a tree view is shown for 'G4S Head Office'. The tree includes 'S1 Office' and 'S2 Handhelds'. Under 'S1 Office', there are 16 numbered items. Item '09 HO Engine FF Payroll' is checked, and its sub-items 'Payroll IN' and 'Payroll OUT' are also checked. Other items like '01 HO Engine Test' through '15 HO Engine Boksburg' and '16 HO Dev Test' sub-items are unchecked.

- A black tick indicates that the user has been granted explicit permissions on the device. Explicit rights can only be removed by physically removing the tick or by clicking on a partial node higher up the structure.
- A Grey tick indicates that the user has access to this device because the user has explicit permissions defined higher up the structure. Removing of inherited access will set the parent node to partial, and all sibling nodes will be given explicit permissions
- A Blue filled box indicates that the user has partial access to the device at this level – one or more children nodes unselected. Clicking on a Partial node will remove all access to children nodes. Parent nodes will be updated to partial where necessary.

New user functions have been added for the dashboard. These determine which tabs can be seen by the user:

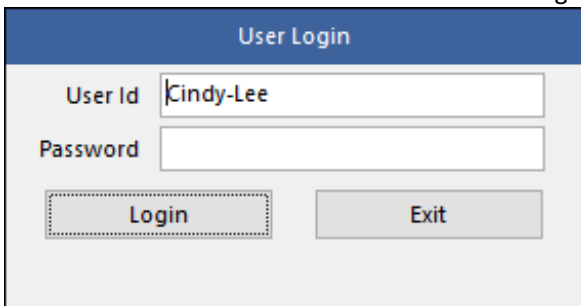


There are 2 functions on the general tab that control the reset and upload:

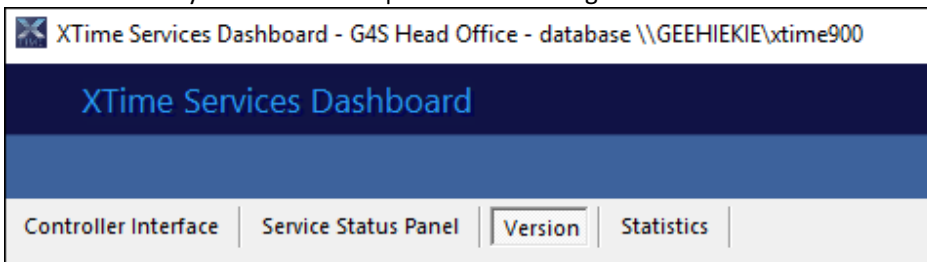


### • Logon Functionality

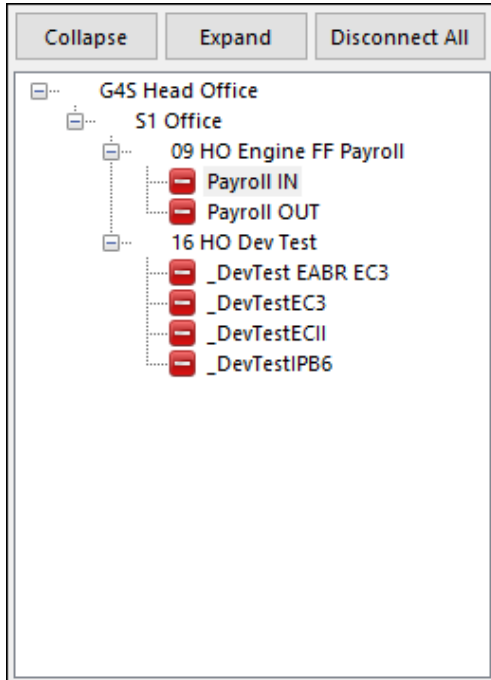
Run the New Dashboard. The user will have to logon:



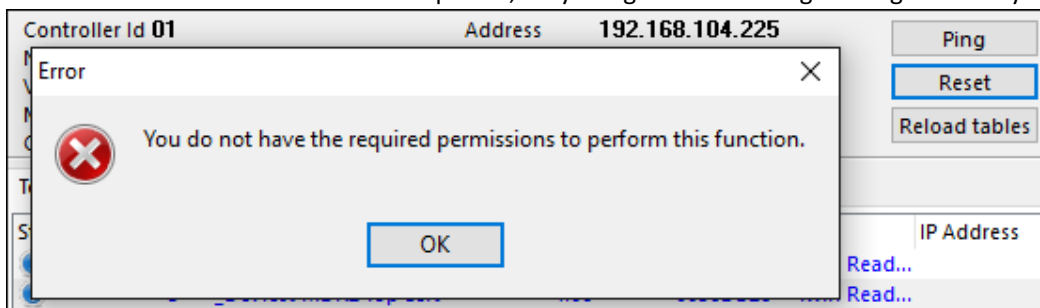
The user will only see the tabs he | she has access rights to:



The user will only see a tree view of the devices to which he has been given rights on the device access:

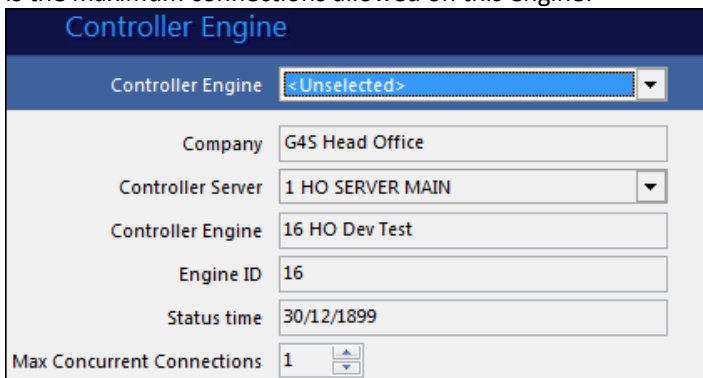


If the user is restricted on resets and uploads, they will get the following message when trying to perform the task:



- **Max Dashboard Connections**

In XTimee 900 on the Controller Engine Setup, there is a Max Concurrent Connections field. This defaults to 10, and is the maximum connections allowed on this engine:



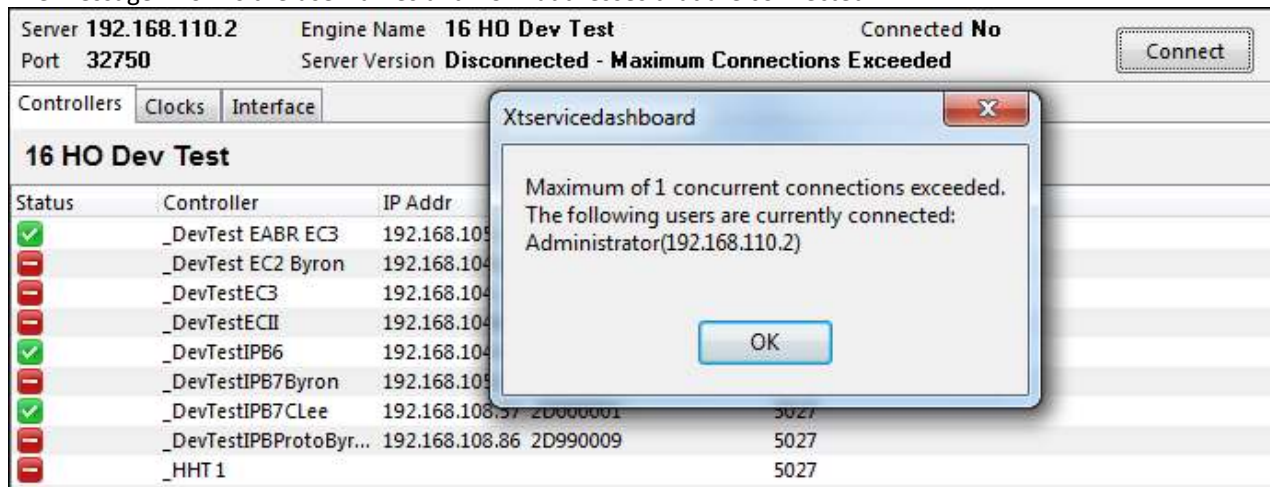
When this is set for the first time or changed, the controller interface must be restarted.

When a user tries to connect to an engine that has already reached the max connections, the user is informed by a message on the engine panel:



Click the connect button:

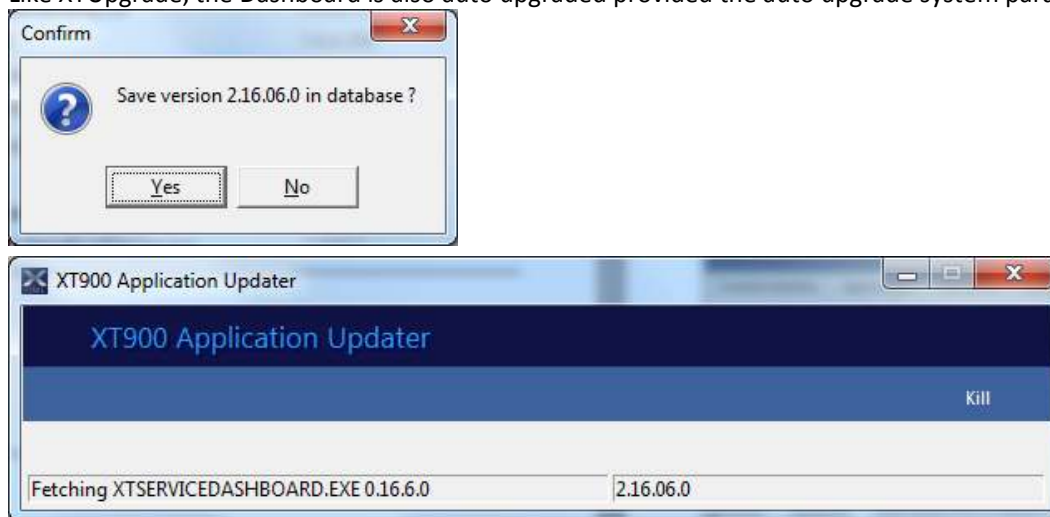
The message informs the usernames and PC IP addresses that are connected:



This user can only make a connection when one of the other users disconnects. The connection will not be made automatically so the user will have to periodically click on the connect button to check if a connection has become available.

- **Auto Upgrade**

Like XTUpgrade, the Dashboard is also auto upgraded provided the auto upgrade system parameter is on:



**PLEASE NOTE:** The auto upgrade feature will only be effective once all sites and PCs are running V2.16.06.1 of the dashboard. The auto upgrade code is not in previous versions before this one, so a user can run any previous version of the dashboard and the upgrade will not work. This feature will only be seen from the next patch or release of the dashboard.

In the last major release for this year we will disable all previous versions of the dashboard thus forcing all sites onto the new version. This version onwards is much more streamlined with the configurable user device access. It is very advantageous to get sites on this version.

## 2.16.04.0

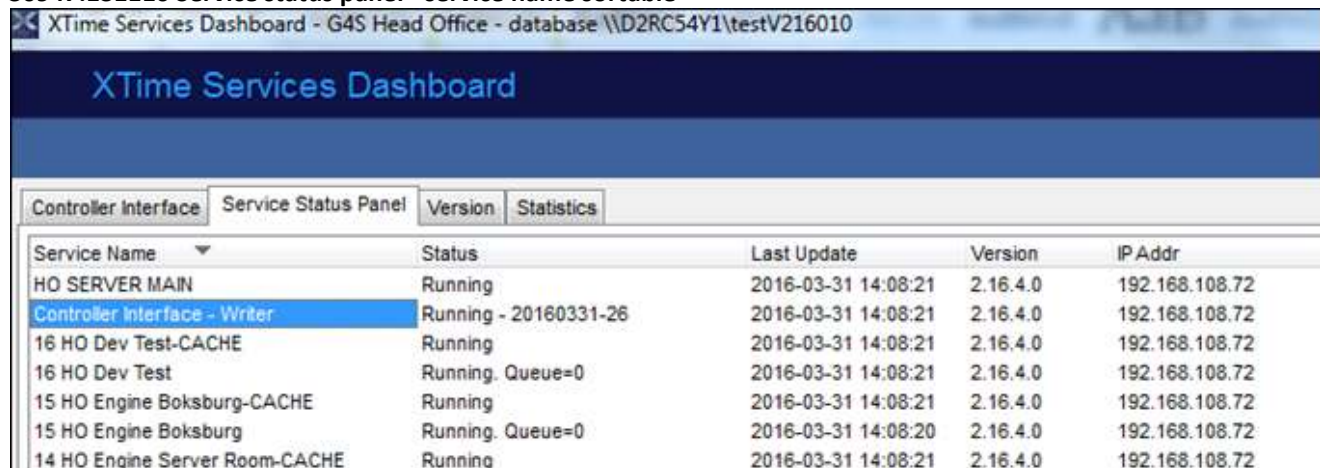
40829:148921 Controllers showing as unknown on statistics screen

Controllers were showing as unknown. The only hardware that can show as unknown are the terminals of controllers that are down. This is because if the controller is down, the state of the terminals are unknown. A controller can only be up or down.

Hardware					
Description	Total	Active	Up	Down	Unknown
Companies	1				
Controller Engines	15		15		
Controller Servers	1		1		
Controllers	68		4	64	
Terminals	91	90	7	6	78

## 2.16.01.10

### 30947:131116 Service status panel - service name sortable



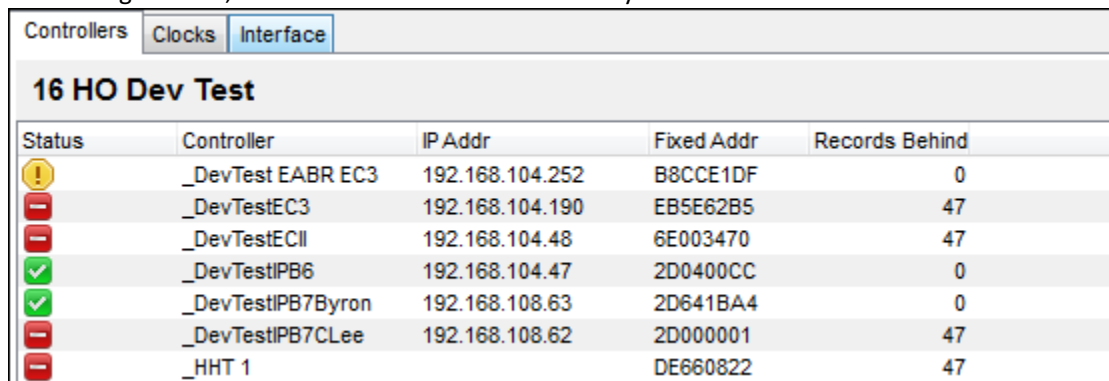
Service Name	Status	Last Update	Version	IP Addr
HO SERVER MAIN	Running	2016-03-31 14:08:21	2.16.4.0	192.168.108.72
Controller Interface - Writer	Running - 20160331-26	2016-03-31 14:08:21	2.16.4.0	192.168.108.72
16 HO Dev Test-CACHE	Running	2016-03-31 14:08:21	2.16.4.0	192.168.108.72
16 HO Dev Test	Running. Queue=0	2016-03-31 14:08:21	2.16.4.0	192.168.108.72
15 HO Engine Boksborg-CACHE	Running	2016-03-31 14:08:21	2.16.4.0	192.168.108.72
15 HO Engine Boksborg	Running. Queue=0	2016-03-31 14:08:20	2.16.4.0	192.168.108.72
14 HO Engine Server Room-CACHE	Running	2016-03-31 14:08:21	2.16.4.0	192.168.108.72

If there were many engines as seen above, it was difficult to see the other services like the Batch that might be lower down in the list. This was due to the screen refresh always focussing on the first service name in the list. Now the services can be sorted and those at the bottom will show at the top. Also, if a service is selected, and the screen refreshes, the selected service will stay selected.

The screen can be moved up and down with the scrollbar and the screen does not “jump back to the top”. Any of the heading columns can be sorted.

### 38428:146685 Engine level updates and clockings tab

On the engine level, there was a controllers tab where you could see the status of each controller on the engine.



Status	Controller	IP Addr	Fixed Addr	Records Behind
!	_DevTest EABR EC3	192.168.104.252	B8CCE1DF	0
-	_DevTestEC3	192.168.104.190	EB5E62B5	47
-	_DevTestECII	192.168.104.48	6E003470	47
✓	_DevTestIPB6	192.168.104.47	2D0400CC	0
✓	_DevTestIPB7Byron	192.168.108.63	2D641BA4	0
-	_DevTestIPB7CLee	192.168.108.62	2D000001	47
-	_HHT 1		DE660822	47

We have now added a Clocks and Interface tab which will show clockings and messages for all the controllers on the engine. Remember, moving off an engine to another screen will disconnect the screen and when you go back it will reconnect. The transactions between this will not show, as with the screen on controller level.



Server **192.168.108.72** Engine Name **16 HO Dev Test** Connected **Yes**  
 Port **32750** Server Version **XTControllerInterfaceService.exe 2.16.4.0**

Controllers | Clocks | Interface

Contr	Time	Terminal	Master	Tag	Dir	Event
	31-03-2016 13:46:25	Connected				
	31-03-2016 13:46:49	Disconnected				
	31-03-2016 14:01:41	Connected				
	31-03-2016 14:02:02	Disconnected				
	31-03-2016 14:02:37	Connected				
	31-03-2016 14:04:28	Disconnected				
	31-03-2016 14:04:40	Connected				
_DevTestIPB6	31-03-2016 14:06:48	_DevTest IPB6	EmpNo:I41	1/208281636089	In	Allowed In
_DevTestIPB6	31-03-2016 14:06:50	_DevTest IPB6	EmpNo:I41	1/208281636089	In	Allowed In
_DevTestIPB7Byron	31-03-2016 14:06:54	_DevTest IPB7Byron	EmpNo:I41	1/208281636089	In	Time Recording On
_DevTestIPB7Byron	31-03-2016 14:06:56	_DevTest IPB7Byron	EmpNo:DYLLAN	1/206162027118	In	2 CertParade
	31-03-2016 14:07:18	Disconnected				
	31-03-2016 14:07:31	Connected				
_DevTest EABR EC3	31-03-2016 14:07:33	_DevTest EABR	EmpNo:DYLLAN	1/206162027118	In	2 CertParade
_DevTest EABR EC3	31-03-2016 14:07:35	_DevTest EABR	EmpNo:I41	1/208281636089	In	Allowed In

Server **192.168.108.72** Engine Name **16 HO Dev Test** Connected **Yes**  
 Port **32750** Server Version **XTControllerInterfaceService.exe 2.16.4.0**

Controllers | Clocks | Interface

Contr	Address	Message	Date no	Sequence	Table	Tran Tim
_DevTestIPB6	192.168.104.47	midTimeReq	0	0		2016-03-
_DevTestIPB7Byron	192.168.108.63	midStatusReport	0	0		2016-03-
_DevTestIPB7Byron	192.168.108.63	MidNewDBUpdReq	20160331	26		2016-03-
_DevTestIPB7Byron	192.168.108.63	MidNewDBUpdReq	20160331	26		2016-03-
_DevTestIPB7Byron	192.168.108.63	MidNewDBUpdReq	20160331	26		2016-03-
_DevTestIPB6	192.168.104.47	midStatusReport	0	0		2016-03-
_DevTestIPB7Byron	192.168.108.63	MidNewDBUpdReq	20160331	26		2016-03-
_DevTestIPB7Byron	192.168.108.63	MidNewDBUpdReq	20160331	26		2016-03-
_DevTestIPB7Byron	192.168.108.63	MidNewDBUpdReq	20160331	26		2016-03-
_DevTestIPB7Byron	192.168.108.63	MidNewDBUpdReq	20160331	26		2016-03-
_DevTestIPB7Byron	192.168.108.63	MidNewDBUpdReq	20160331	26		2016-03-
_DevTestIPB7Byron	192.168.108.63	MidNewDBUpdReq	20160331	26		2016-03-
_DevTestIPB7Byron	192.168.108.63	MidNewDBUpdReq	20160331	26		2016-03-
_DevTestIPB7Byron	192.168.108.63	MidNewDBUpdReq	20160331	26		2016-03-
_DevTestIPB7Byron	192.168.108.63	MidNewDBUpdReq	20160331	26		2016-03-
_DevTest EABR EC3	192.168.104.252	midStatusReport	0	0		2016-03-
_DevTestIPB7Byron	192.168.108.63	MidNewDBUpdReq	20160331	26		2016-03-

### 2.16.01.9

Version Alignment only

### 2.16.01.0

Version Alignment only

### 2.15.10.13

Version Alignment only

### 2.15.10.12

Version Alignment only

### 2.15.10.8

Version Alignment only

### 2.15.10.5

#### 38043:136126 Errors on Network Loss

The dashboard was recording errors in the log file on network loss. These have been cleared but it is still necessary to close and re-open the dashboard if network is lost.

## 2.15.10.4

### 37979:135899 Update controller records behind on Engine status screen

On the Engine screen, the records behind were not being updated correctly. They are now updated with the status message every minute. Only the active engine is updated. Please note that when clicking on the engine, you could be anywhere in the minute so the refresh might not happen immediately when you click on an engine.

## 2.15.10.3

### 37782:135789 Non-socket TCP errors between Dash and CI, Batch & SagemEngine Services

Disconnecting the dashboard caused a connection error on the services that display through the dashboard.

## V2.15.10.2

37386: Add IPs of TCP/IP terminals to display on dashboard

**Ensure that GUQ V2.15.10.2 has run to insert the TERM\_IP column in the terminal table. When running V2.15.10.2 of the Dashboard or above, ensure to run the Controller Interface V2.15.10.2 or above as well as controller firmware version V7.09 in order for the TCP | IP terminal IP addresses to display.**

Controller Id	<b>01</b>	Address	<b>192.168.104.46</b>			
Name	<b>_DevTest EABR EC3</b>	Status	<b>Up</b>		Ping	
Version	<b>7.9</b>	Status time	<b>16/10/2015 10:20:23</b>		Reset	Reset Time <b>16/10/2015 08:3</b>
Model	<b>EC3</b>	Connected	<b>None</b>		Reload tables	Upload Time <b>15/10/2015 13:2</b>
Comms	<b>20151016-3547</b>					

Status	Id	Name	Version	Fixed Addr	Type	IP Address
✓	2	_DevTest MDR1 Top Left	4.06	0056DB27	Twin Reader Terminal	
✓	3	_DevTest MDR2 Top Right	4.06	0056DB28	Twin Reader Terminal	
✓	4	_DevTest MDR3 Bottom Left	4.06	0056D9A9	Twin Reader Terminal	
✓	5	_DevTest MDR4 Bottom Right	4.06	0056D9AA	Twin Reader Terminal	
✓	1	_Dev Test EABR	2.05	B8CCE1DF	EABR	192.168.104.46

## V2.15.10.1

### 37881: Non-socket error causing cache freeze

This was an exception in the controller interface that made the dashboard look like it was freezing. This has been fixed in v2.15.10.2 of the controller interface.

## V2.15.10.0

Version alignment only

## V2.15.08.1

Client disconnect error in ulCSTcpServer. When the dashboard was shutdown, sometimes the thread from the CI did not close down which resulted in the next startup of the dashboard to show the controllers in an unknown state. This was also causing an untrapped violation.

## V2.15.08.0

Versioning only

## V2.15.07.7

36375: Get reset and upload times with controller status

36375: Change timer thread synchronization

## V2.15.07.6

36375: Display messages and clocks only when controller is selected

### V2.15.07.3

36375: Invalid Pointer operation and SQL Connection property required for this operation in uServiceStatus.pas

### V2.15.07.2

36375: Critical section added to unit frContrIntfMainDisplayContainer.pas UpdateTreeViewStatus procedure –Gcoal

### V2.15.07.1

36375: Re-Add Connect|Disconnect buttons-GCoal

## V2.15.07.0

**V2.15.07.0 must be run with Controller Interface V2.15.07.0.** It is not backward compatible with previous versions of the Controller Interface. We have implemented new messaging to relieve the load on the dashboard and some of these improvements are in the messaging from the Controller Interface.

**30947:** Message filtering

### V2.15.04.1

**34206:** Added time and thread number to the log file name to stop log locking

## V2.15.04.0

No Changes

### V2.15.01.2

**33639:** Added last update and last reset timestamp code for display on the dashboard

### V2.15.01.1

**32927:** Interface not responding – Dashboard was causing the controller interface to not respond on multiple instances where running.

**30947:** List boxes changed to NextGrid components

## V2.15.01.0

**VERSION CONVENTION CHANGE ONLY**



## SUPPORT:

**Call Centre:**

+27 (0)10 001-4668

**Email Address:**

support@skycom.co.za

**Website:**

www.skycom.co.za