



## User Guide

# Data Compare Tool

V2.17.07.1



Workforce Management Solutions

Securing your time and resources

# 1 Contents

- 2 REVIEW SEQUENCE ..... 2
- 3 DOCUMENT OVERVIEW ..... 2
  - 3.1 DOCUMENT SUMMARY ..... 2
  - 3.2 FUNCTIONALITY SCOPE ..... 2
- 4 INSTALLATION ..... 3
  - 4.1 GET THE FILES ..... 3
  - 4.2 INSTALLATION ..... 3
- 5 FUNCTIONS ..... 3
  - 5.1 GET DB ..... 3
  - 5.2 CONTROLLER INFO ..... 5
  - 5.3 PRINT CLOCKS ..... 6
  - 5.4 PRINT KEYS ..... 6
  - 5.5 PRINT DATA ..... 6

## 2 REVIEW SEQUENCE

VERSION	DATE	REVIEWER	UPDATES
2.16.06.0	2016-07	Cindy-Lee vd Walt	Initial document
2.16.10.1	2017-03	Cindy-Lee vd Walt	Updates
2.17.04.0	2017-04	Cindy-Lee vd Walt	Morpho Facial   Equipment required   Visitor Equipment tables added

## 3 DOCUMENT OVERVIEW

### 3.1 DOCUMENT SUMMARY

This document explains how to use the Data Compare tool to get information and data directly from the controller.

### 3.2 FUNCTIONALITY SCOPE

The data compare tool was designed to assist with troubleshooting when it seems that controllers do not have the same configuration as the database. The controller data can be extracted and investigated for discrepancies.

## 4 INSTALLATION

### 4.1 GET THE FILES

Navigate to [www.skycom.co.za](http://www.skycom.co.za) from your internet browser. Click on the downloads page and under Utilities you will see the Data Compare Tool. Click on this and it will download the files and documentation needed to run the Compare Tool.

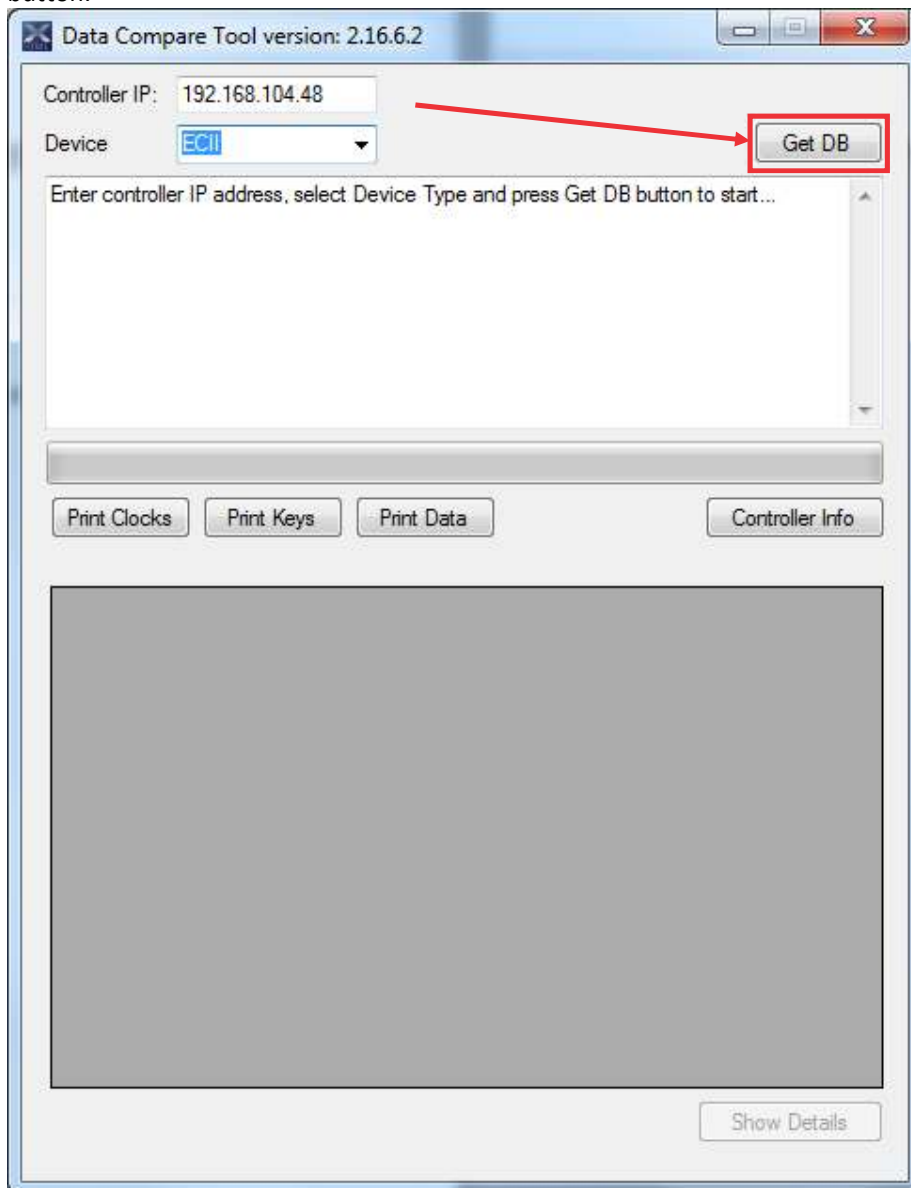
### 4.2 INSTALLATION

Select the Data Compare Tool Vx.xx.xx.x and copy to the local PC. This does not have to be in the XTime folder as it communicates directly with the controller via TCP/IP on the network. No installation is necessary, just unzip the folder.

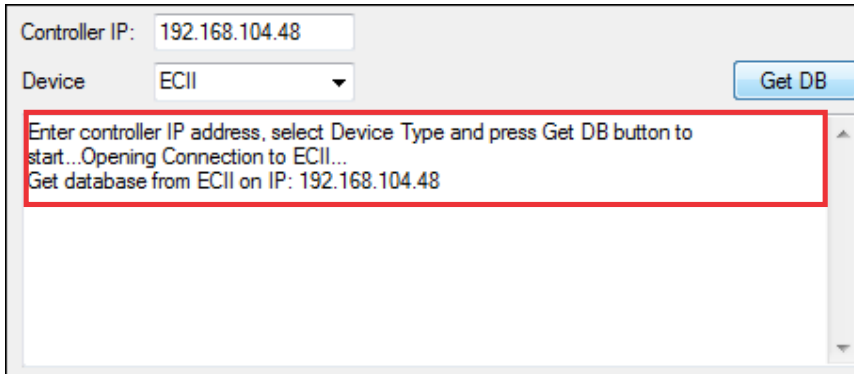
## 5 FUNCTIONS

### 5.1 GET DB

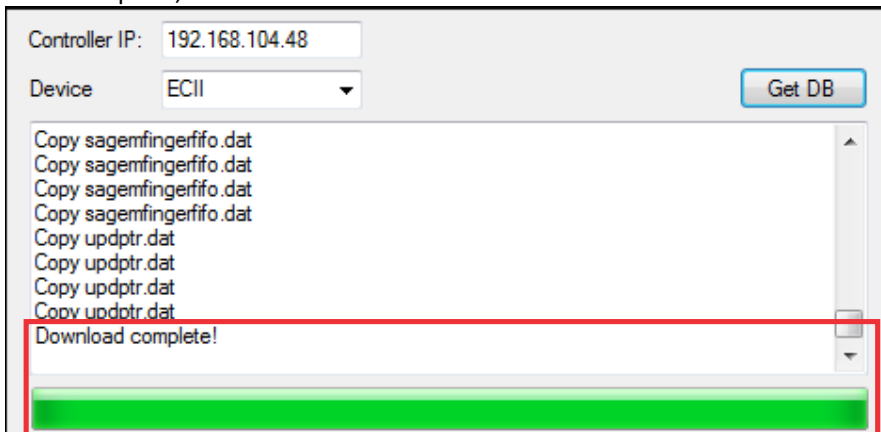
To get the data, double click to open the tool and enter the IP address and type of controller and click on the GETDB button:



If the Data Tool can make a connection to the controller, it will start downloading the data. The progress can be seen in the information window of the application:

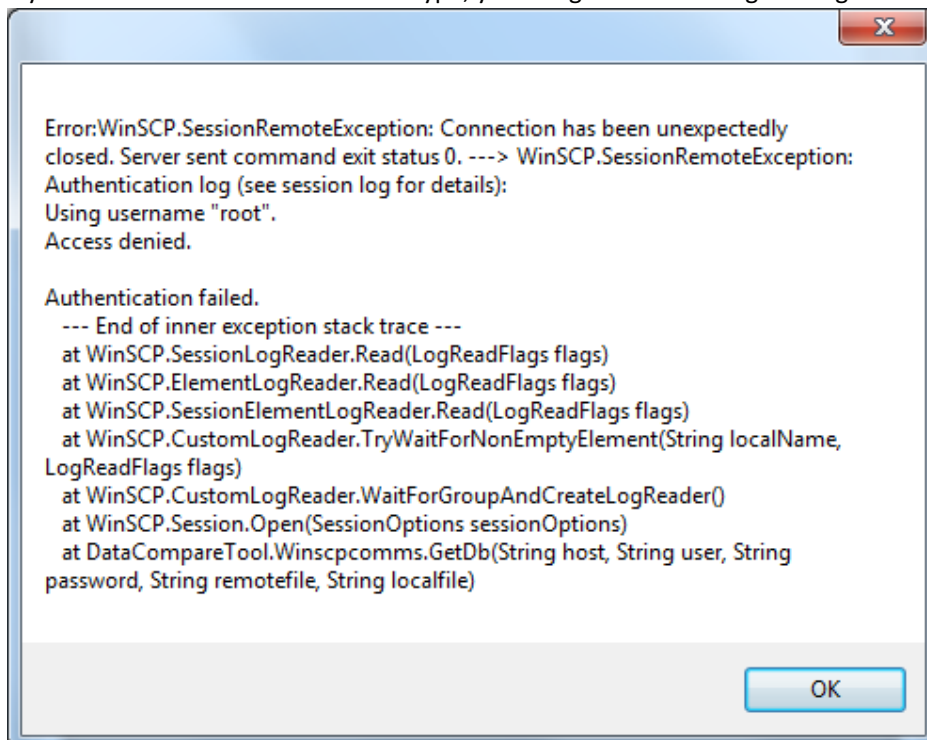


Once complete, the last line of the information window will show “download complete!”



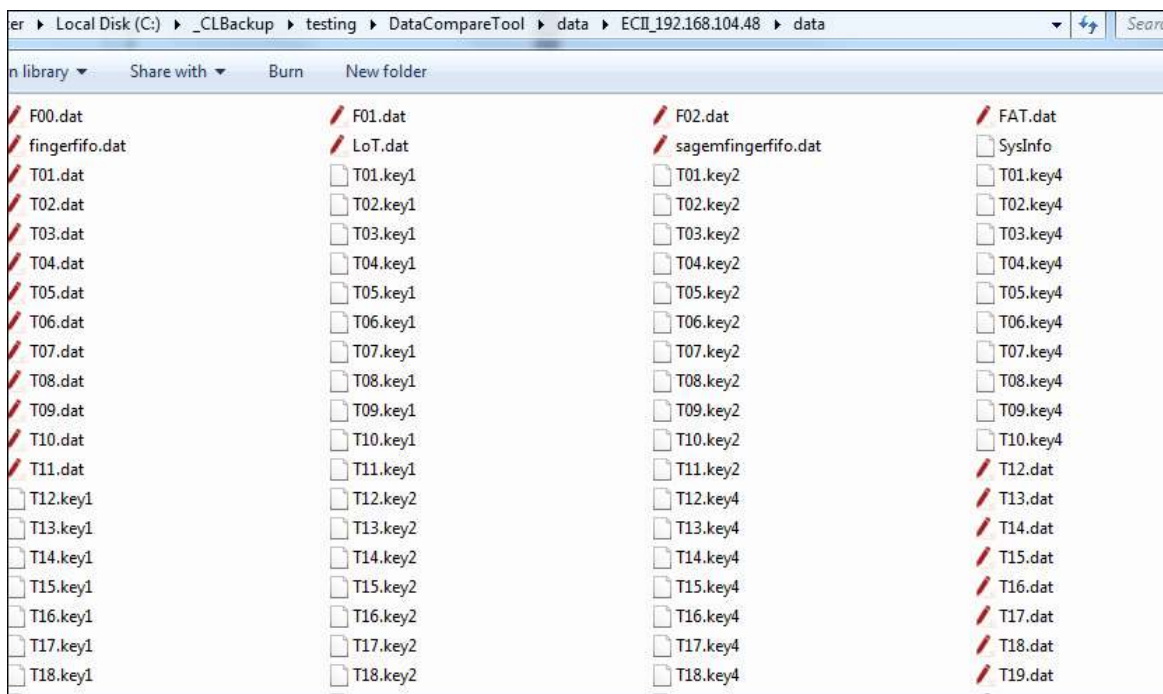
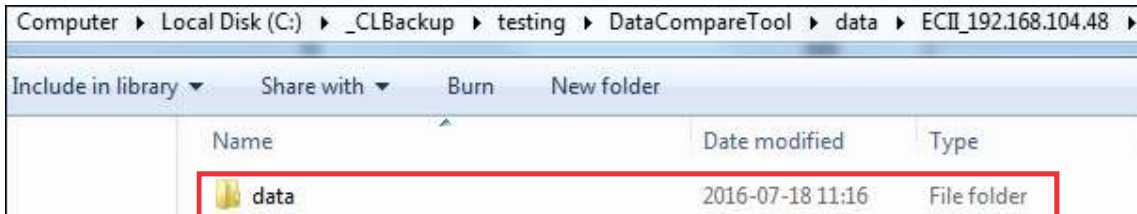
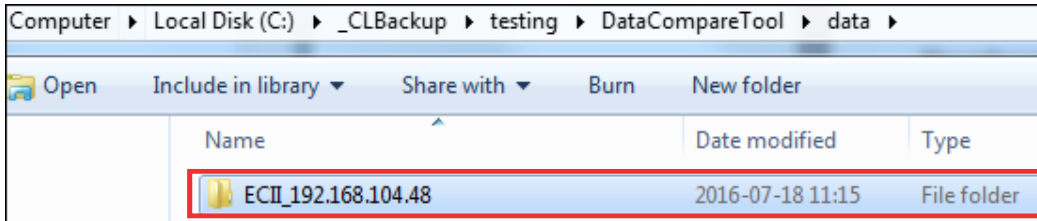
**NOTE:**

If you select the incorrect controller type, you will get the following message:



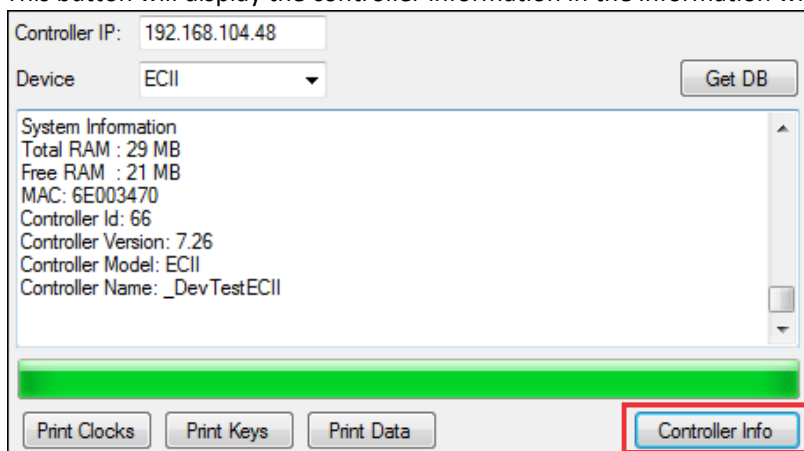
Click OK and select the correct controller type and the files will start to download.

The information is stored in folders that are created when the Get DB command is run. All the files that were seen in the information window are now saved in data | ECII\_192.168.104.48 | data as per the example controller run:



## 5.2 CONTROLLER INFO

This button will display the controller information in the information window



### 5.3 PRINT CLOCKS

The information window will show the file path where the file of clockings still on the controller will be saved:

```
Write to file: C:\_CLBackup\testing\DataCompareTool\analysis
\ECII_192.168.104.48\clocks
Print Clocks done!
```

This can be viewed in notepad:

```
-----Clocks-----
Len 40
NOC = 40 / 40 = 1
RecLen = 40
TranTime 1970-01-01 00:00:00, TermCodeId 0, MatSq 0, TagType 0, TagCode
, EtCodeId 0, Dir 0, ApbZone 0, CrCodeId 0, VisHost 0, ChOverride 0
Clocks check done
```

### 5.4 PRINT KEYS

The keys determine the position of the data that the controller interface sends to the controller. If this is run and there are mismatches, it could be that the firmware running onsite does not match the table structure of the controller interface. This could indicate that the firmware and controller interface are mismatched and that there might be database updates outstanding (Get Upgrade Queries) that must be run.

Table Name	Table Number	RecLen	NumOfKeys
AccessGroups	1	8	71
AccessTimes	2	7	3
Time Recording Group	3	4	28
Clockpoints	4	23	52
Clockpoint Certificates	5	6	14
Cycles	6	6	8
Cycle Shifts	7	5	38
Holidays	8	4	7
Leave Codes	9	3	6
Shifts	10	11	10
System Parameters	11	52	1

**121 Key Mismatch Errors** Show Details

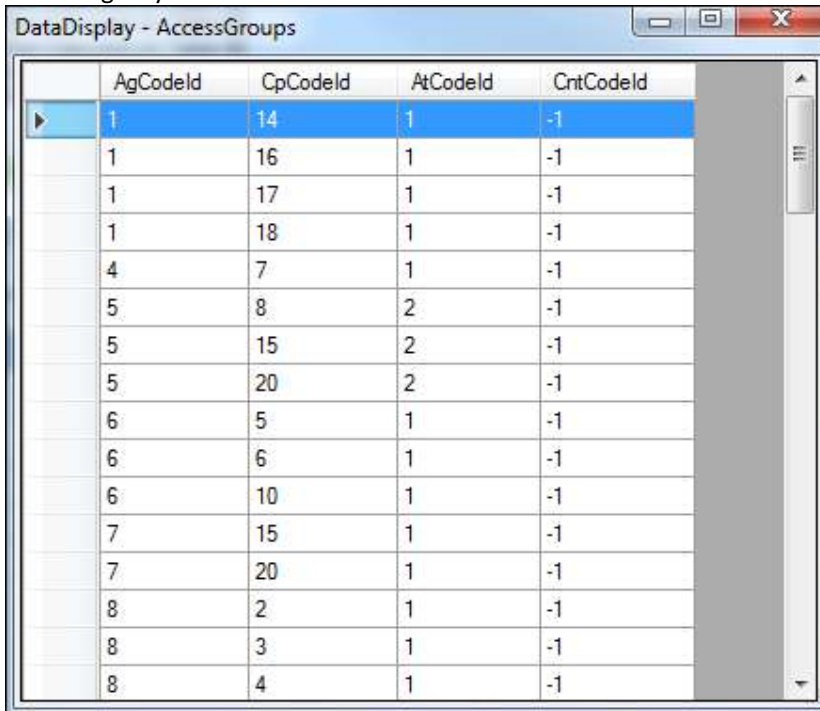
### 5.5 PRINT DATA

Prints data information in the data grid view as well as writes the information to the analysis folder.

Table Name	Table Number	RecLen	NumberOfRecords
AccessGroups	1	8	74
AccessTimes	2	7	3
Time Recording Group	3	4	32
Clockpoints	4	23	56
Cycles	6	6	8
Cycle Shifts	7	6	291
Leave Codes	9	3	6
Shifts	10	11	10
System Parameters	11	52	1
Terminals	12	61	3
Zones	14	7	55

This is all the data that is loaded on the controller. This is useful for troubleshooting when there are incidents of data not being on the controller or different data on the controller

Once you have highlighted a row of data, click on the **“Show Details”** button:  
This will give you the details of the data.



	AgCodeId	CpCodeId	AtCodeId	CntCodeId
▶	1	14	1	-1
	1	16	1	-1
	1	17	1	-1
	1	18	1	-1
	4	7	1	-1
	5	8	2	-1
	5	15	2	-1
	5	20	2	-1
	6	5	1	-1
	6	6	1	-1
	6	10	1	-1
	7	15	1	-1
	7	20	1	-1
	8	2	1	-1
	8	3	1	-1
	8	4	1	-1

The information is stored in file form in the analysis folder and can easily be sent to a system specialist or the development department for further troubleshooting if necessary.

**\*\*\* END OF DOCUMENT \*\*\***