



User Guide

Config Tool

V2.17.04.0



Workforce Management Solutions

Securing your time and resources

Contents

1	REVIEW SEQUENCE	2
2	INSTALLATION	3
3	FOLDERS	3
3.1	ec3graphics folder	3
3.2	firmware folder	3
3.2.1	reset folder	4
3.3	graphics folder	5
4	THE MAIN SCREEN	5
5	COMMANDS	6
5.1.1	Set controller	6
5.1.2	Load All Tables	9
5.1.3	Reset Controller	9
5.1.4	Ping Controller	9
5.1.5	Install Firmware	9
5.1.6	Install IPB7 Graphics	10
6	FIND CONTROLLER	11

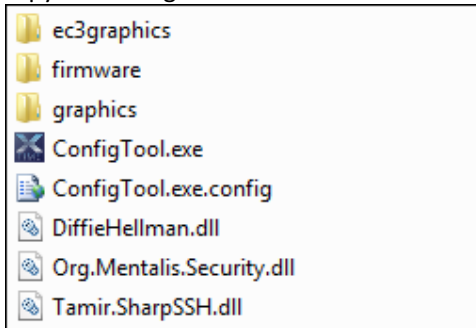
1 REVIEW SEQUENCE

Sequence	Date	Reviewer	Update detail
1	2015-11	Cindy-Lee	Initial version
2.16.06.0	2017-01	Cindy-Lee	Formatting; Updates
2.17.04.0	2017-04	Cindy-Lee	Formatting; Updates

2 INSTALLATION

The Config tool can be run from any folder on any PC. It does not need to be in the XTime folder as it does not use the properties file for connection. It does also not require any installation; simply click on the exe to open the tool.

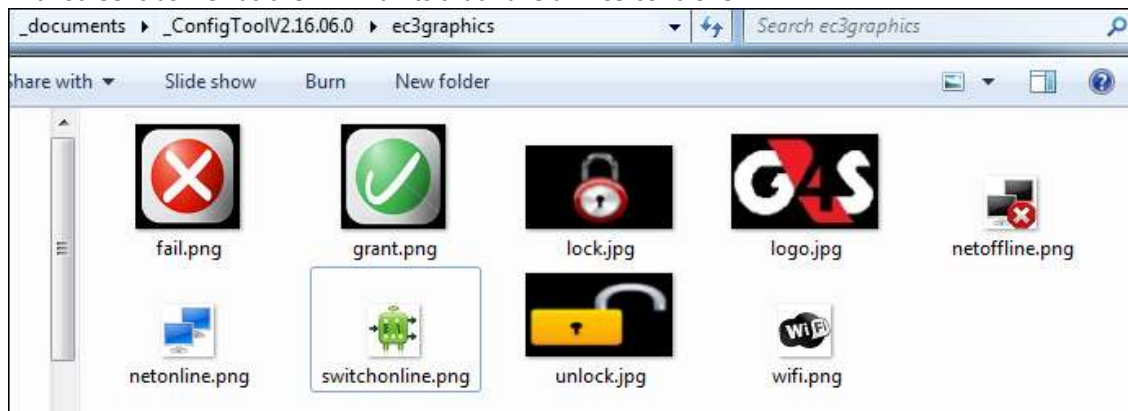
- Copy the Config file to a PC. Ensure that the following files and folders are inside the Config folder:



3 FOLDERS

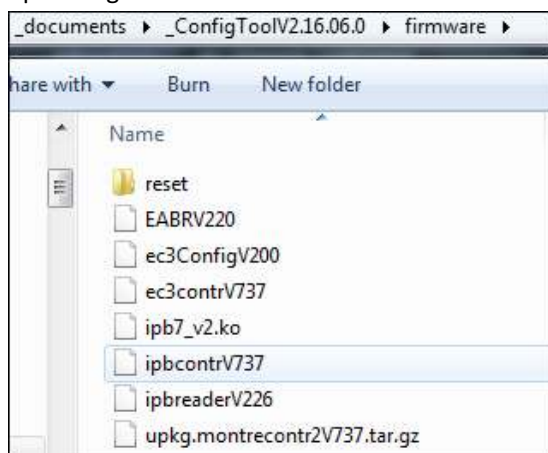
3.1 ec3graphics folder

- In this folder you will find exactly as the name indicates. These are the graphics we use on the EC3 controllers with screens as well as the EABR units that have an EC3 controller.



3.2 firmware folder

- Place all the latest firmware in the firmware folder. Please note that should you have multiple versions of the same firmware in this folder, the tool will always select the latest | newest version to install. However, should you wish to roll back to a later previous version, this must then be selected from the dropdown list when uploading the firmware.



3.2.1 reset folder

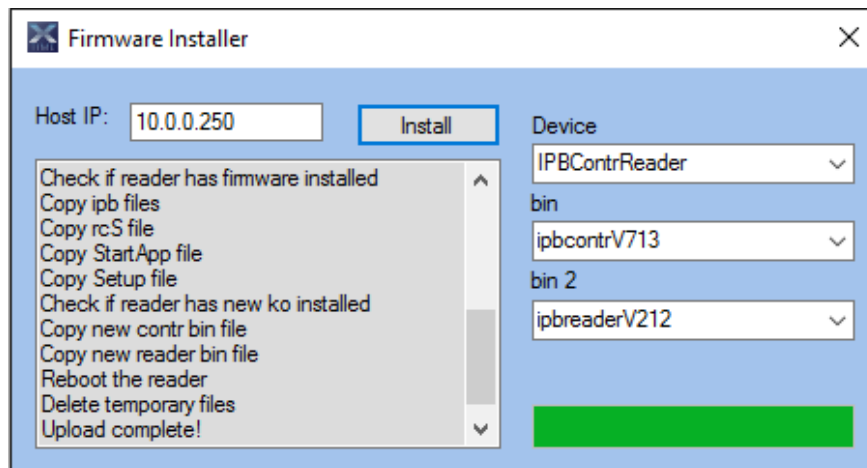
- These files allow the user to reset the IPB7 back to the Ipulse factory default firmware.

3.2.1.1 TO RESET THE READER:

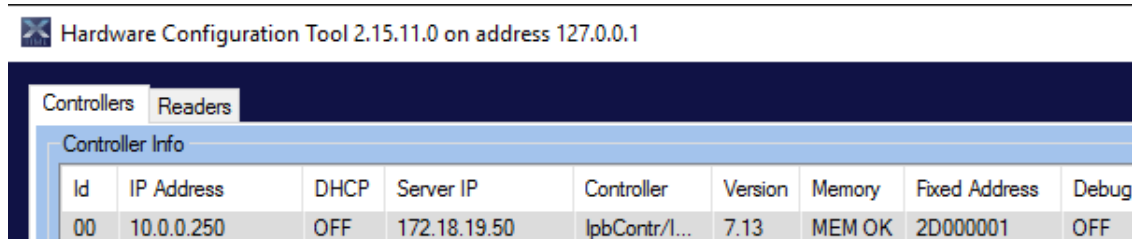
1. Reset the reader using the **←5079←** shortcut.
2. Wait for the beginning of the reboot cycle (just after the “Starting IPB” message) and hold ‘C’ key until you hear 3 beeps.
3. Enter the password issued to you by your branch manager. If you do not have a reset code, contact the software department so that one can be issued to you. You will hear another 3 beeps and after a few seconds another 3 beeps.
4. The IPB unit will again restart and load the iPulse firmware.
5. IP will also default to 10.0.0.250
6. Change your IP address to the same range as the IPB unit – e.g. 10.0.0.100
7. Open the configuration tool. Remember that you will not be able to see the unit while it is still on iPulse firmware.



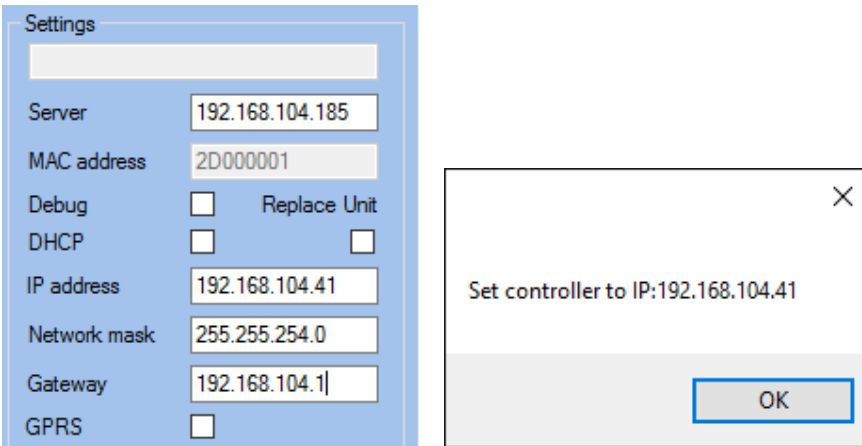
8. Click on the Install firmware button. This will open the installer window. Type in the IP address of 10.0.0.250. Select the IPBContrReader and select the controller firmware for the first bin and the Reader for the second bin and click on the install button.



9. This will load the G4S firmware and the reader will reboot. Once it is complete, you can configure the reader with the correct details by selecting it and filling in the fields on the right.



10. Once the correct details are configured, you can change your laptops IP address back to automatic. You should now be able to see the unit's details by refreshing the configuration tool screen or by typing in the IP address in the find field at the bottom of the screen.



Hardware Configuration Tool 2.15.11.0 on address 192.168.174.1

Reader Info						
LA	IP Address	DHCP	Controller IP	Reader	Version	Fixed Address
01	192.168.104.41	OFF	127.0.0.1	lpb7Reader	2.12	2D000001

Hardware Configuration Tool 2.15.11.0 on address 127.0.0.1

Controller Info								
Id	IP Address	DHCP	Server IP	Controller	Version	Memory	Fixed Address	Debug
00	192.168.104.41	OFF	192.168.104.185	lpbContr/l...	7.13	MEM OK	2D000001	OFF

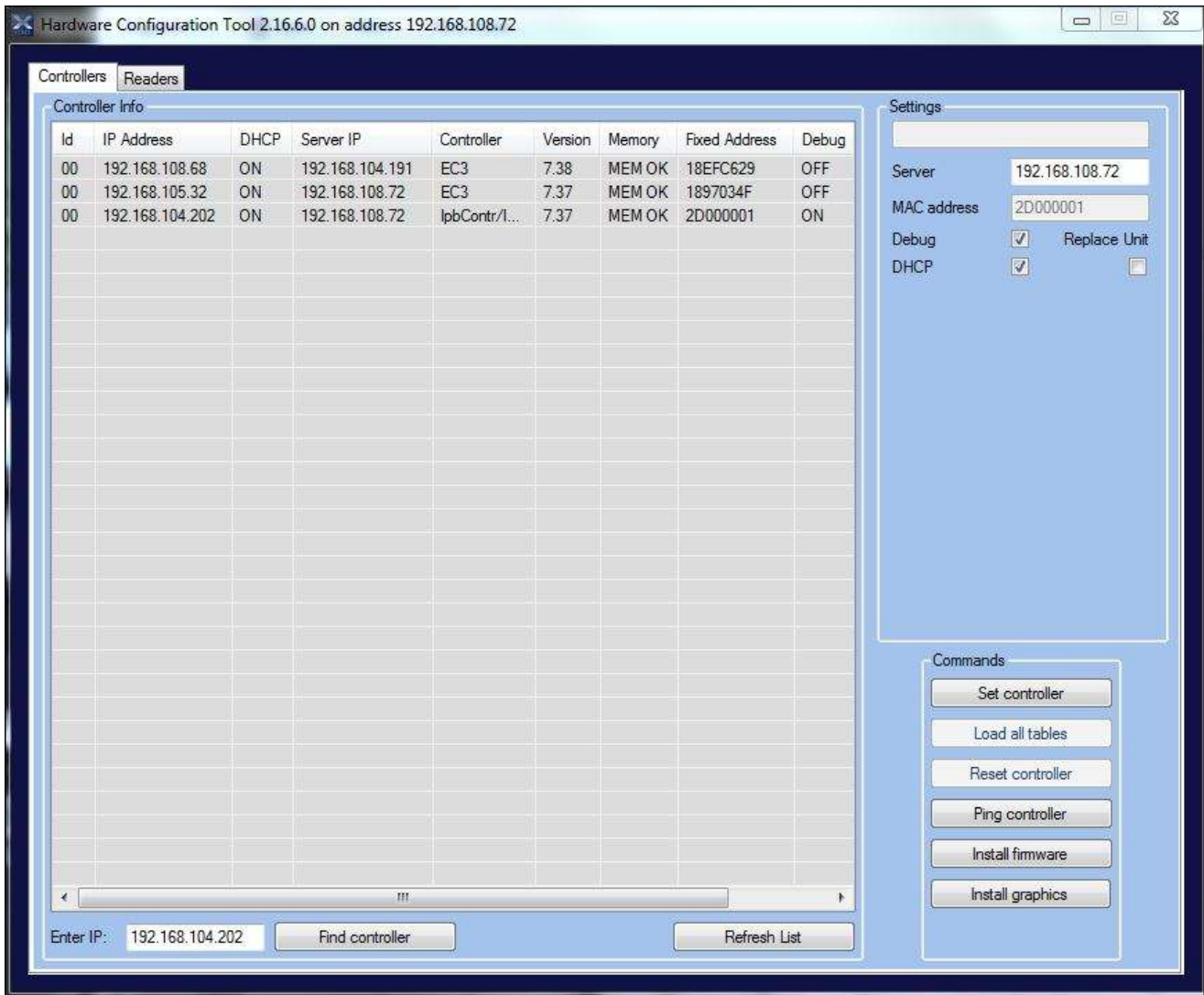
3.3 graphics folder

These graphics are for the IPB7 readers only. (Refer to the IPB7 Graphics Installer document)



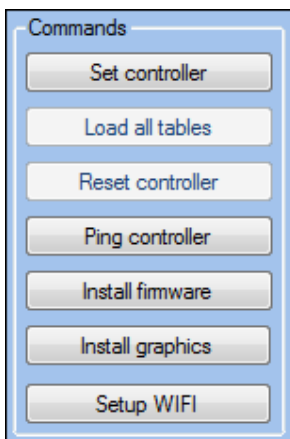
4 THE MAIN SCREEN

All controllers will be visible on this screen. If your screen is blank, it means that either port 32124 is blocked on the PC where the Config tool is running, or the IT policy restrictions for the user are blocking the comms. To view a controller, type the IP address in the enter IP text box at the bottom of the application and click on the "Find Controller" button.



5 COMMANDS

These are the main functions of the configuration tool as described below:

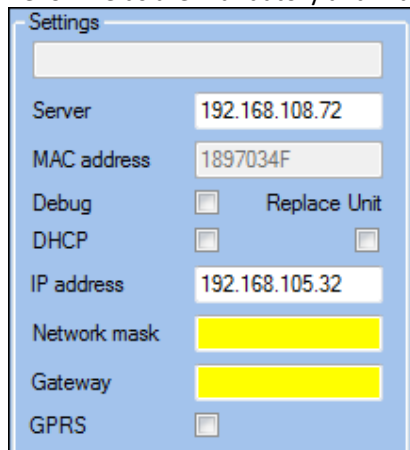


5.1.1 Set controller

Controllers can be configured through the Config tool. The name and MAC Address are automatically populated when the controller gets its configuration from the controller interface which reads it from the database. So it is

important to have already configured the controller and the terminals in XTime. Also very important is the fixed address on the terminal in the case of an IPB 7 and EABR.

Yellow fields are mandatory and must be populated.



5.1.1.1 Server

This is the IP address of where the Controller Interface is running. It should be the same as set in XTime for the Controller Server. There will be controller interface running on each server.

5.1.1.2 MAC address

This field is automatically populated and cannot be edited. Controllers get their configuration from the controller interface (which gets it from the database) based on the fixed address.

5.1.1.3 Debug

Checking this box creates debug log files for the controllers. These are useful to specialists and development in troubleshooting issues that might arise from time to time. The log files are saved in the Xtime folder log folder in the controllers' folder.

5.1.1.4 DHCP

Set this if the controller does not have a static IP address. It will then not be necessary to fill in the IP address, network mask and gateway fields.

5.1.1.5 IP address

Enter the IP address of the controller if it is static and will never change as when set to DHCP.

5.1.1.6 Network Mask

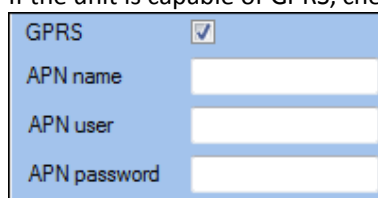
The network mask that is valid for the site. This information is usually available from the site IT department. This must be the network mask of the controllers IP address range, NOT the servers as they could be different.

5.1.1.7 Gateway

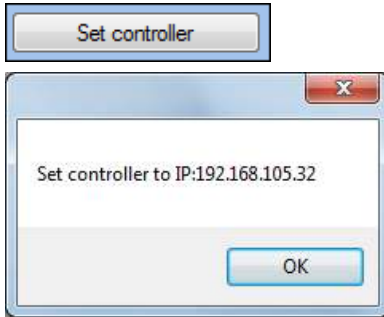
As with the network mask, this information is usually available from the IT department. This must be the gateway of the controllers IP address range, NOT the server as they could be different.

5.1.1.8 GRPS

If the unit is capable of GPRS, checking the box will bring up the APN settings that need to be captured:

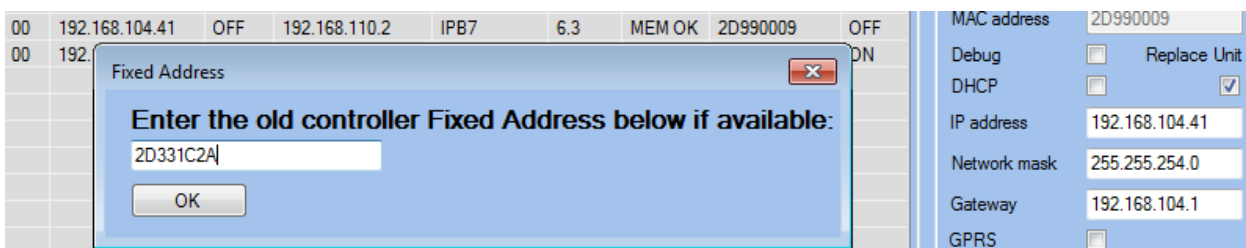


Once the settings have been entered correctly, click on the “Set controller” button under commands to save the settings on the controller. Click OK on the information pop-up to return to the Config tool main screen.



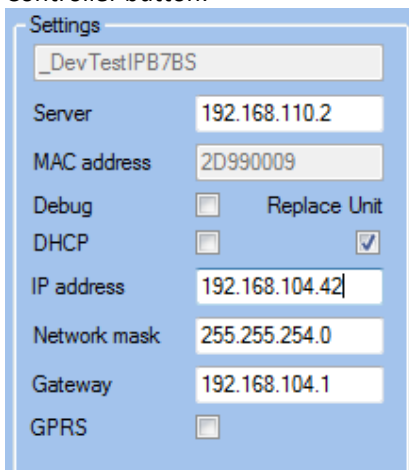
5.1.1.9 REPLACE UNIT

This function is to send configuration from a broken replaced controller to the new one to cater for controllers that are in a remote location. Select the New controller from the list and tick the Replace Unit checkbox:

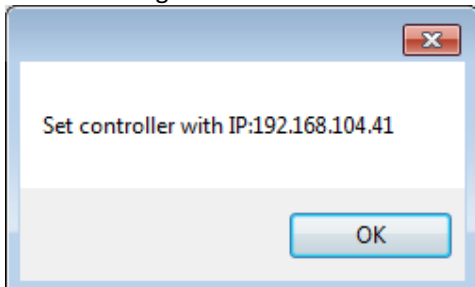


Enter the fixed address of the old controller and click OK:

Change the IP address and other settings such as the Network Mask and Gateway if necessary and click on the Set Controller button:



Click OK to confirm after checking that you are replacing the correct controller. The new controller will reboot with its new settings and the controller will come online.



PLEASE NOTE:

This replace unit feature should only be used when you are connecting a new controller that does not already exist on the network as a controller loaded in the db. If you want to swap two existing controllers then you need to do this through the XTime GUI and change the fixed addresses.

5.1.2 Load All Tables

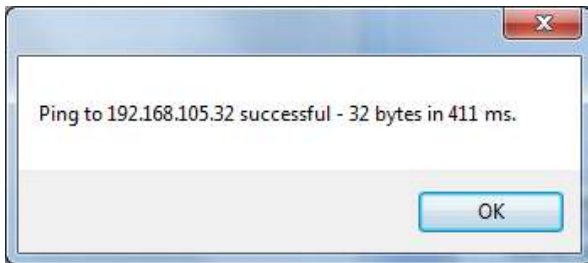
This command will start a full upload to the controller. This is only available when using firmware that is older than V6. This command has been moved to the Services Dashboard on the Controller Interface tab so that it can be audited.

5.1.3 Reset Controller

This command will reset the controller. Please note that should an ECII controller not have a memory stick inserted, the reset command will cause a full upload as the controller will lose its write point. This option is also only available when using firmware older than V6. This command has been moved to the Services Dashboard on the Controller Interface tab so that it can be audited.

5.1.4 Ping Controller

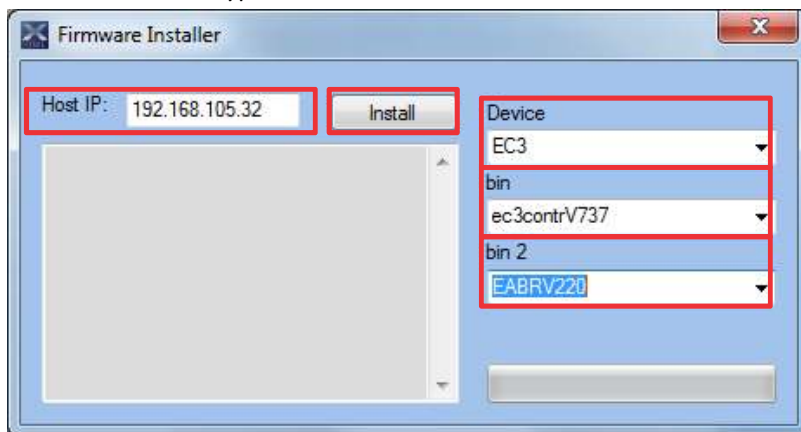
This command will show a pop-up box with the ping statistics in it. If no box pops up, the Config tool cannot connect with the controller.



5.1.5 Install Firmware

Select a controller by clicking on it in the list. Once it is highlighted click on the "Install Firmware" button.

The install pop-up will be displayed. It will automatically have the selected controller's IP address in the host IP box, the correct Device type and the latest version of the bin file that is in the firmware folder.



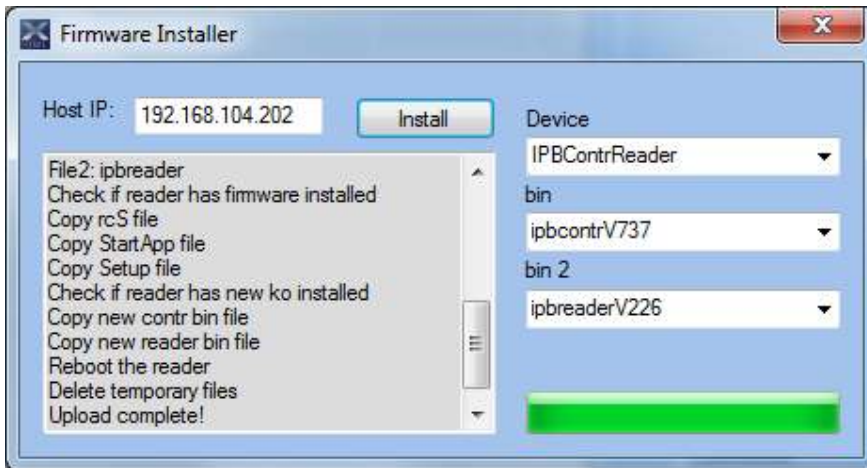
Host IP: This is the controller's IP Address that automatically populated:

Device: The type of device is also automatically populated.

Bin: This is the controller firmware file. It will automatically be populated with the latest version for that type of controller that is in the firmware folder. If you want to load a previous version, you must manually select it from the dropdown selection.

Bin 2: This is the reader firmware file. It will automatically be populated with the latest version for that type of controller that is in the firmware folder. If you want to load a previous version, you must manually select it from the dropdown selection.

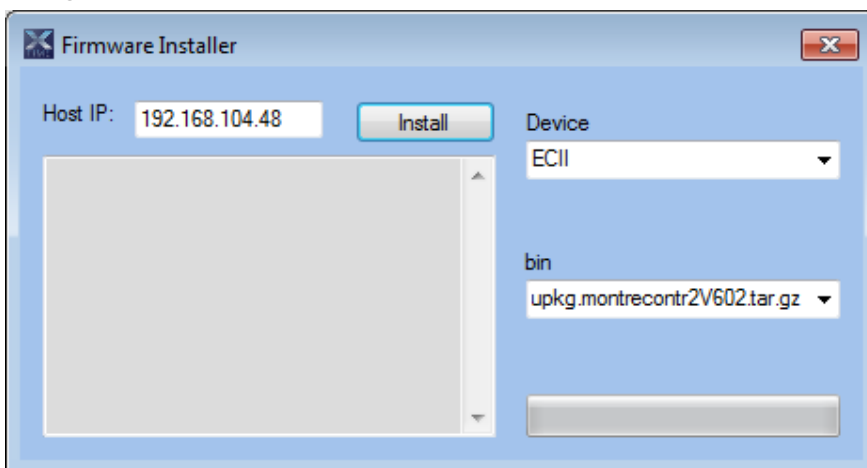
Once all the selections are made, the Install button will be enabled. Click it to start the upload. As the upload progresses, you will see messages in the information window. When it is complete, "Upload complete" will display in the window and the reader will reboot. You can close the Firmware Installer window.



The version should display as the version that you have uploaded. If it does not display immediately, click on the refresh button at the bottom of the screen.

Controller Info									
Id	IP Address	DHCP	Server IP	Controller	Version	Memory	Fixed Address	Debu	
00	192.168.108.68	ON	192.168.104.191	EC3	7.38	MEM OK	18EFC629	OFF	
00	192.168.104.202	ON	192.168.108.72	lpbContr/lpb...	7.37	MEM OK	2D000001	ON	
00	192.168.105.32	ON	192.168.108.72	EC3	7.37	MEM OK	1897034F	OFF	

All types of controller firmware are loaded in the same manner. Simply select the controller by highlighting it and click on the install button. Please note, if you have not placed the corresponding firmware in the firmware folder, the bin file field will be blank and the Install button will be disabled. Click on the red Close button to return to the Config tools main screen.

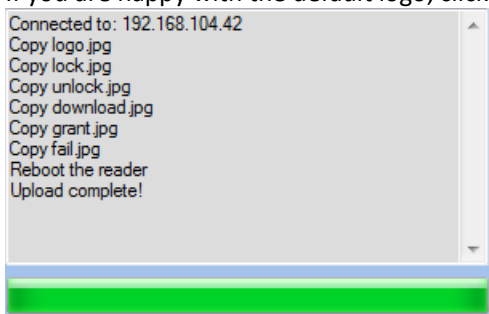


5.1.6 Install IPB7 Graphics

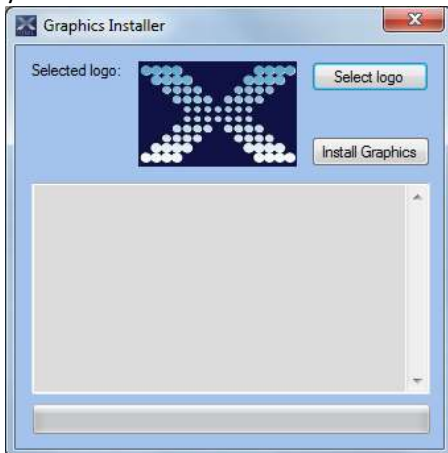
This is very simple as the graphics are pre-loaded. Simply click on the Install Graphics button to get the following screen:



If you are happy with the default logo, click on install Graphics. Close the dialog when Upload Complete shows.



If you want to change the logo and insert the client's logo, click on the "Select logo" button and select a logo that you want to use. Then click on the "Install Graphics" button to upload the new logo to the reader.



6 FIND CONTROLLER

At the bottom of the screen, there is a find controller button. Should there be a controller on the network that is not displaying in the list, you can enter the IP address in the text field and click on find controller:



If the controller does not then display in the list, it might not have comms.

***** END OF DOCUMENT *****