
Installation Guide

XTime Services

V2.17.01.2



Workforce Management Solutions

Securing your time and resources

Contents

1	REVIEW SEQUENCE	2
2	XTIME SERVICES	2
3	INSTALLING A SERVICE	2
4	UNINSTALLING A SERVICE	5

1 REVIEW SEQUENCE

VERSION	DATE	UPDATED BY	DETAILS
1	2013-09	Cindy-Lee vdWalt	Initial version
2	2014-09	Cindy-Lee vdWalt	Montre Server out - Controller Interface in
2.17.01.2	2017-03	Cindy-Lee vdWalt	Formatting and updates

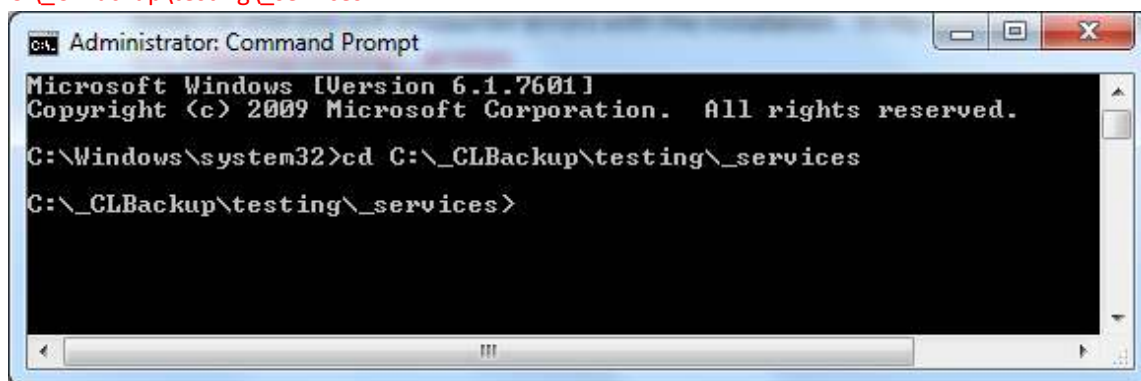
2 XTIME SERVICES

The following is a list of services that can be installed in this manner:

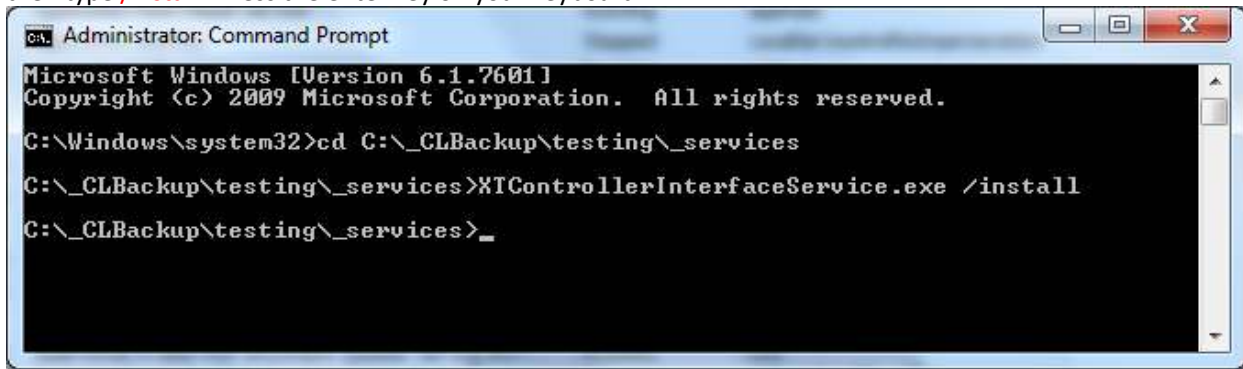
- XTRegisterService
- XTControllerInterfaceService
- XT900BatchService
- XTSagemEngineService
- XTAlarmHelperService
- XTBMSService
- XTTerminalStatusMonitorService
- XTVisitorIQSyncService
- XTFatigueService
- XTEcosSyncService

3 INSTALLING A SERVICE

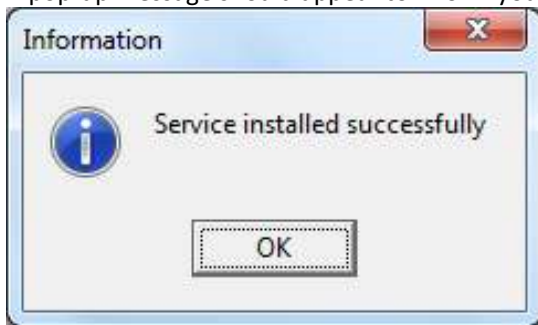
- Start the command prompt as an administrator by right clicking on CMD and select 'run as administrator'. This is very important and if the prompt is not run as an administrator, the services will not install correctly.
- Once open you will need to change the directory to look to the file path where your exe's are located. For example, if your exe's are in a folder called XTime which is located on the C drive, you would then type in the following line: `cd c:\Xtime900` and press the enter key on the keyboard. It is imperative to point to the correct folder or else you will encounter errors with the installation. In my example, the service exe's are located in `C:_CLBackup\testing_services`



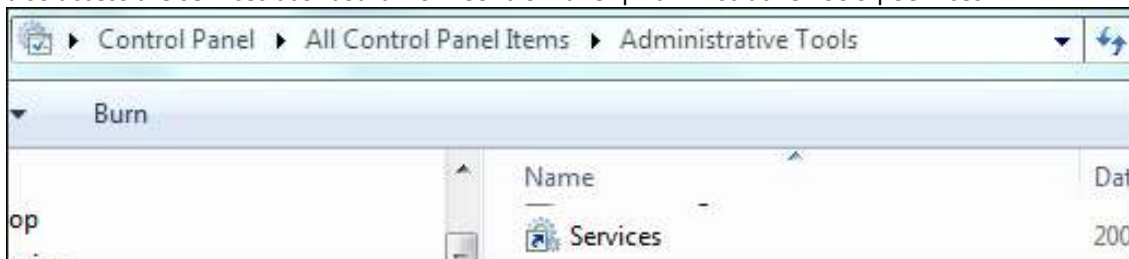
- Now that you are in the correct directory, x and press the tab until it displays 'XT.exe'. Press the spacebar and then type `/install`. Press the enter key on your keyboard.



- A pop-up message should appear to inform you that the service has installed successfully.



- Follow this process for all the services you wish to install, starting at step 3 above.
- Once you have installed the services they need to be started. Click on the windows **START** button and in the run box just above it, type in the following: `services.msc`. This will open the services management panel. You can also access the services dashboard from Control Panel | Administrative Tools | Services



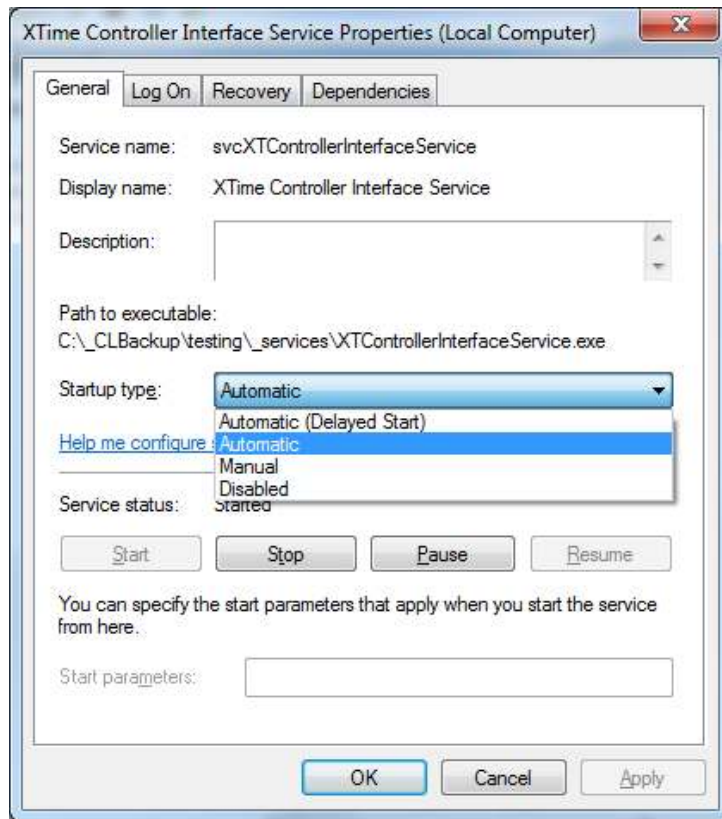
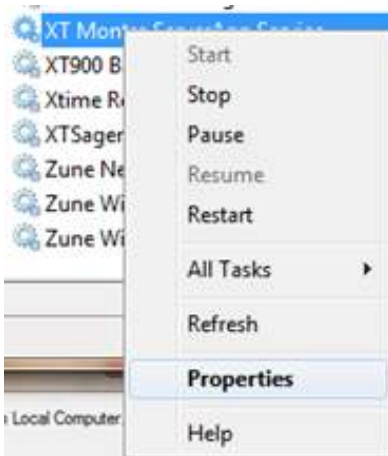
- Scroll down to where you can see the Services you installed:

Name	Description	Status	Startup Type	Log On As
XTSagem Engine Service			Manual	Local System...
Xtime Register		Started	Automatic	Local System...
XTime Controller Interface Service			Automatic	Local System...
XT900 ECOS Sync Service			Manual	Local System...
XT900 Batch Service			Manual	Local System...
WWAN AutoConfig	This service ...	Started	Automatic	Local Service
World Wide Web Publishing Service	Provides W...	Started	Automatic	Local System...

- Select one of the services so that it is highlighted and click on the Start the service to the left of the screen or right click on the service and select Start. The status will show "Started".

Name	Description	Status	Startup Type	Log On As
XTSagem Engine ...			Manual	Local Syste...
Xtime Register		Started	Automatic	Local Syste...
XT900 ECOS Sync ...			Manual	Local Syste...
XT900 Batch ...			Manual	Local Syste...
WWAN Auto		Started	Automatic	Local Service
World Wide V		Started	Automatic	Local Syste...
Workstation		Started	Automatic	Network S...
WMI Perform			Manual	Local Syste...
WLAN AutoC		Started	Automatic	Local Syste...
Wireless PAN			Manual	Local Syste...
Wired AutoC			Manual	Local Syste...
WinHTTP We		Started	Manual	Local Service
Windows Up		Started	Automatic (D...	Local Syste...
Windows Tim		Started	Manual	Local Service
Windows Sea		Started	Automatic (D...	Local Syste...
Windows Re			Manual	Network S...

- If the Startup Type is Manual, right click on the service and select properties. Select automatic as the Startup type and click on apply and then OK at the bottom right of the box.

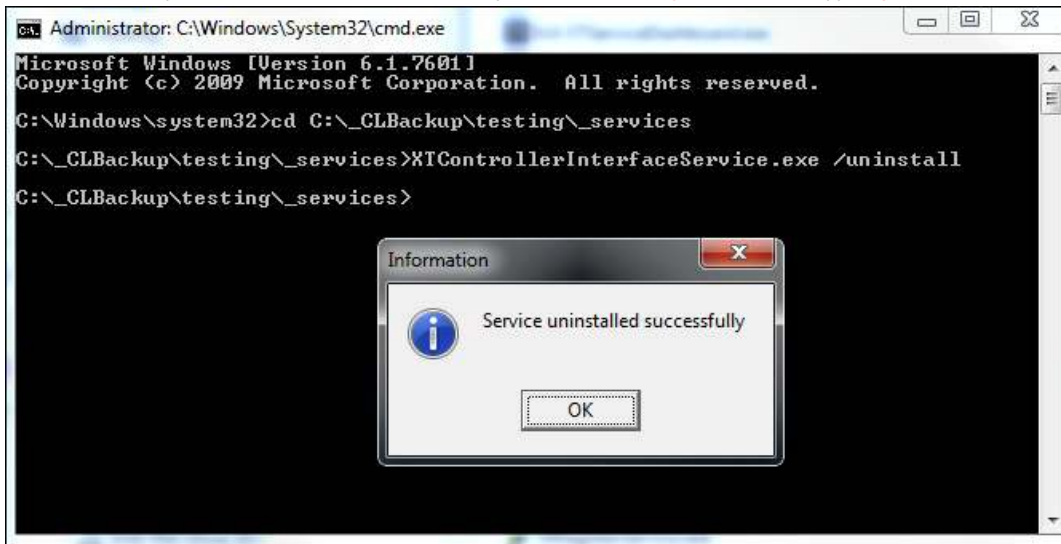


- The service will now show that the start-up is automatic in the services list. This is important as should the PC shutdown due to power failures and is restarted, the service will automatically start-up and the site will continue to function normally.

Name	Description	Status	Startup Type	Log On As
XTSagem Engine Service			Manual	Local System
Xtime Register		Started	Automatic	Local System
XTime Controller Interface Service		Started	Automatic	Local System

4 UNINSTALLING A SERVICE

1. Follow steps 1 and 2 from above. In step 3, instead of `space /install` type `space /uninstall`:



***** END OF DOCUMENT *****